



Water Ways

Volume III - Spring 2007



*Now in more
places than ever*



WRT's contaminant removal processes have been installed in more and more water treatment facilities across the country to help meet regulatory compliance. That's because we provide the most effective, economical and environmentally responsible solution for removing radium, uranium and other contaminants. Our total solution includes process equipment, proprietary treatment media, safe exchange of media, and proper handling and disposal of used media.

See how communities like yours are making water safer by calling 303.424.5355 or visiting wrt.net today.



Your total contaminant removal provider.

Visit us at wrt.net

© 2006 Water Remediation Technology, LLC. All rights reserved.

IRWA Staff Members

Frank Dumire *Executive Director*
dumire@ilrwa.org • 217-820-4626

Heather McLeod *Membership Services Assistant*
ilrwahm@ilrwa.org

Denise Burke *Administrative / Program Assistant*
ilrwadb@ilrwa.org

Wayne Nelson *Training Specialist / Field Staff
 Coordinator*
ilrwawn@ilrwa.org • 217-820-1561

Gale Moore *Circuit Rider*
moore@ilrwa.org • 217-820-4754

Pat Gammill *Circuit Rider*
gammill@ilrwa.org • 217-820-1564

John Bell *Circuit Rider*
ilrwajb@ilrwa.org • 217-820-1568

Dick Rohr *Wastewater Technician*
ilrwadr@ilrwa.org • 217-820-1567

Gary Chase *Wastewater Technician*
chase@ilrwa.org • 217-820-1560

Bill Dowell *Wastewater Technician*
dowell@ilrwa.org • 217-820-1562

Chuck Woodworth *Ground Water Specialist*
ilrwcw@ilrwa.org • 217-820-1569

Mark Mitchell *USDA Source Water Specialist*
mitchell@ilrwa.org • 217-820-1565

IRWA Board Members

President

Greg Bates
*Jersey County
 Water Company*

Vice President

Ron Cowles
City of Grayville

Secretary

Jeff Tumiati
Village of Stonington

Treasurer

Dale Hanner
City of Oakland

Board of Directors

Steve Fletcher
*Washington County
 Water Company*

Tom Shrewsbury

Village of Hebron

Jay Bell

City of Chenoa

Scott Wallis

City of Princeton

Wayne Dixon

City of Mason City

Waterways is the official publication of the Illinois Rural Water Association, P.O. Box 6049, Taylorville, Illinois 62568, and is published quarterly for distribution to members as well as other industry associations and friends. Articles and photographs are encouraged. Advertising and submissions should be mailed to the above address or e-mail us at ilrwadb@ilrwa.org.

TABLE OF CONTENTS

Hard Times Ahead <i>by Frank Dumire</i>	4
Mark Your Calendars!!!	4
Use of Computers to Make Your Job Easier <i>by Greg Bates</i>	5
Crossword Puzzle Solution	5
Utilizing Both Mesophilic and Thermophilic Anaerobic Sludge Digestion <i>by Gary Chase</i>	8
About Those Samples and Reports We Have to Do! <i>by Wayne Nelson</i>	9
NRWA Annual Leadership Conference & Exhibition Center.....	12
2007 Annual Conference — Effingham, Illinois.....	14-15
New Test Methods for Wastewater and Biosolids	17
Welcome New Members	17
Certified Training <i>by John Bell</i>	19
The Vacation Experience of a Lifetime: Hershey Park, PA <i>by Robert W. Benjamin</i>	20
Just For Fun — Crossword Puzzle	23
The Water Board Bible Series.....	24
Thanks USDA <i>by Rob Johnson</i>	25
WANTED	25
Feedback.....	26

IRWA's Mission Statement

“Protecting and preserving the water and wastewater resources of Rural Illinois through education, representation and on-site technical assistance”.

ON THE COVER...

2007 Water Taste Test Winner was Lake Egypt Water District. Pictured on the front cover are IRWA Ground Water Technician Chuck Woodworth and Lake Egypt Water District employees Corey Edgington and Gary Rhodes.

ADVERTISERS INDEX

*Thanks to our advertisers who make our magazine possible.
 Please patronize them when you can!!*

Cady Aquastore	27	Natgun Corporation	16
Caldwell Tanks	13	Newell Sand/Rock Filter Cleaning	9
Crawford, Murphy & Tilly, Inc.	8	Norman Noe Co. Inc.	20
Curry & Associates Engineers	25	Northern Water Works Supply	22
Earth Science Laboratories, Inc.	16	PDC Laboratories, Inc.	18
East Jordan Iron Works, Inc.	11	Ressler & Associates	5
First St. Louis Securities, Inc.	19	Rhutasel & Associates, Inc.	9
Godwin Pumps	21	Stewart Spreading, Inc.	10
Heneghan & Associates, P.C.	21	Test, Inc.	22
Lemna Technologies	20	The Ford Meter Box Company	7
Maguire Iron	7	United Systems & Software, Inc.	11
Maurer-Stutz, Inc.	19	USA Bluebook	28
McLaughlin Group	13	Utility Service Company, Inc.	22
Metropolitan Industries	6	Water Leak Locators	9
		Water Remediation Technology	2
		Water Well Solutions	17

Hard Times Ahead

By Frank Dunmire, Executive Director

During the first week of March, NRWA and its state affiliates found out that the United States Environmental Protection Agency (USEPA) chose to utilize ALL of the money that was provided them for fiscal year 2007 (FY 07) for internal uses. It was decided by USEPA that the money Congress had historically provided Rural Water associations across the country for programs such as Groundwater Protection, Source Water Protection and Training/Technical Assistance were not valuable enough to fund – if they weren't specifically directed to.

In past years, Congress had directed USEPA to fund programs such as these by attaching an "earmark" to a bill directing them to provide funding for these and other programs. Originally, the 109th Congress had provided these funds in the overall spending package for the Federal Government and the Senate provided funds on their side as well. As the two bills came together in joint committee to reconcile any differences between the bills, an election was taking place that produced a change in powers. The Democrats had won control of both the House and the Senate. Along with this change, came a stalemate that resulted in no budget for the Federal Government to operate under. This was not the first time (nor will it be the last) that the Government was being threatened with a shut down.

As in the past, to avoid an all-out shut down, a Continuing Resolution (CR) was passed which allowed the Government to operate at last year's (FY 06) funding levels – of which we were "in". Unfortunately, when the original CR was extended to cover the remainder of FY 07, all earmarks were removed and Rural

Water's funds were swallowed up by USEPA. Not only were the remaining FY 06 funds consumed by the agency, but all funds retroactive to October 1, 2006 (beginning of the fiscal year) were gobbled up as well.

Illinois Rural Water Association contacted all of their Congressional Representatives in an effort to restore funds for these valuable programs and was met with great support from our delegation. To no avail, letters were written to the Administrator of the USEPA urging him to fund the Rural Water initiatives so that no state would have to suspend their programs. With the declination of their request it is now time to face some very tough decisions.

NRWA has agreed to fund Illinois' Groundwater Protection Program as well as the Training/Technical Assistance Program through May 15, 2007. After that date it is still an uncertainty what will happen. As of this writing, efforts are still ongoing trying to get funding restored through a supplementary spend-



ing bill that is working its way through the Senate. We are being told that, at best, this is a long shot, but we will continue our uphill battle until there are absolutely no alternatives left to pursue.

Just what all of this means to Illinois and its programs has not yet been determined. The Board of directors and staff of Illinois Rural Water Association will spend a great deal of time in the upcoming weeks weighing all of the options before "pulling the plug" on any of the programs. It is our hope that continuing work in DC will result in a positive outcome. We will keep you posted as events unfold.

MARK YOUR CALENDARS!!!

Upcoming IRWA Events

Friday, August 31, 2007—4th Annual IRWA Golf Outing
Edgewood Golf Course—Anburn, Illinois
(agendas will be mailed out in the upcoming months)

October 23 & 24, 2007—3rd Annual Northern Conference
Clock Tower Resort & Conference Center—Rockford, Illinois

Use of Computers to Make Your Job Easier

By Greg Bates, Company Manager

In the current era of changing regulations and increased demands on the water operator's time, it is important to manage your day in the most efficient way possible. The water operator today may be dealing with the new Stage II Disinfection Byproducts Sample Plan, preparing the yearly Consumer Confidence Report, managing new construction jobs as well as all the other daily tasks required. With companies trying to keep labor expenses to a minimum, it makes it difficult for an operator to get everything done in the time allotted, especially with added demands each year with the changing laws. Computers can be a big help with the paperwork requirements, as well as monitoring the entire distribution system.

Several years ago we began putting our monthly Environmental Protection Agency reports into a Microsoft Excel spreadsheet, as well as our Water Loss Usage Statement. Using the spreadsheets creates efficient recordkeeping as well as the convenience of having your records all in one place. This allows efficient data tracking and reporting for the Environmental Protection Agency or anyone else who requires it for company infrastructure. It is essential for auditing loss vs. sale records. Material/job estimates can be done quickly, as well as

better inventory procedures. The set-up process takes some time, but once that is accomplished it makes the operator's job much easier.

A computerized S.C.A.D.A system allows the operator to view the distribution system from one location. It also allows you to view history at a particular site to compare data or make engineering evaluations over the years. The newer technology allows you to see actual meter readings, flow rates, tank levels, pressures, temperatures, chemical scale weights, electronic valve status, variable speed drive status and so much more useful data. The system also notifies the operator of alarms that the operator determines are critical to the distribution system or mechanical problems at the sites. The S.C.A.D.A. system allows less man-hours and constant surveillance of the water system. The system can also be used for security with cameras, entry alarms and motion detectors.

Illinois Rural Water is beginning



to provide computer training workshops for office staff and operators in the near future. We hope these workshops will make your job easier in this increasingly demanding time.

Sincerely,

Greg

Your Link to Superior Water

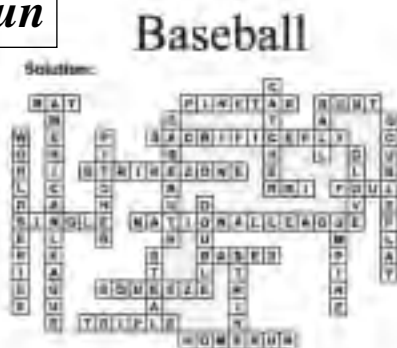
- Filters & Media...
- Chlorination Equipment
- Aeration & Stripping Towers
- Mixers/Flocculators
- Water Quality Monitors...
- Membrane Treatment Technology
- Lime Slakers...
- Chemical Metering Pumps
- Spare Parts & Replacements

RESSLER
& ASSOCIATES, INC.

P.O. Box 4018, Bay View, Michigan 48008
810.666.8882
sales@resslerassociates.com

Just For Fun

Cross
Word
Puzzle
Solution
Key



TRY ONE STOP SHOPPING

for your entire pump and control needs
and gain peace of mind with our 24/7 Emergency Service.



Wastewater Treatment Solutions



S.C.A.D.A. Integration



Radium and Iron Removal Systems



Pad Mounted Control Packages



Municipal Booster Control Packages

Other Services

- Sanitary & Storm Water Lift Stations
- Valve Vault/Meter Stations

- Water Booster Stations
- 5-Million-Dollar-Plus Parts Inventory

For almost 50 years, Metropolitan Industries, Inc. has been the pumping world's single source for superior quality pumps, control systems, prefabricated systems and ancillary equipment for both the water and wastewater industry. We have the knowledge, experience and capability

to tackle any pumping application related to the pumping industry. We will back up our work with 24/7 service to give you that peace of mind you deserve. Choose Metropolitan for your next water or wastewater project and see how convenient one stop shopping can be.

The Pumping World's One Stop Shop



37 Forestwood Drive, Romeoville, IL 60446
815-886-9200 • Fax 815-886-6932
www.metropolitanind.com

WATER WORKS BRASS AND PIPELINE PRODUCTS



THE FORD METER BOX COMPANY, INC.

(260) 563-3171 • FAX: (800) 826-3487

<http://www.fordmeterbox.com>



SUSTAINABILITY



tank maintenance



tank repair



new tanks



Maguire Iron, Inc.

We've been in the business since 1915 and have built and serviced everything from ground storage reservoirs to all styles of elevated tanks.

P.O. Box 1446 Sioux Falls, S.D. 57101 Ph: 605.334.9749 www.maguireiron.com

Utilizing Both Mesophilic and Thermophilic Anaerobic Sludge Digestion

By Gary Chase, Wastewater Technician

Where do you see both types of anaerobic sludge digestion employed? Well, I have only seen one facility with both digestion temperature ranges. The facility is the Marengo Wastewater Treatment Plant. Marengo has a population of 7,600 residents and is located in Southwestern Mc Henry County.

The abandoned Conventional Activated Sludge Plant, which was constructed in 1963 and taken out of service in 1985, is the lone remnant of the old treatment plant. The new Three-Ring Oxidation Plant was put online in 1985. Along with the new Activated Sludge Plant, two new covered final clarifiers follow the Activated Sludge Process. Preliminary treatment employs an auto-

matic bar screen and grit removal. The Influent is measured with a Foxboro Magmeter housed inside an 8" flow tube. The Thermophilic and Mesophilic Digesters, sludge thickening, centrifuge and sludge storage building were put into operation in 2001.

Normal mode of operation is the Extended Aeration. The mode of operation changes to Conventional during maximum flow periods. The average daily flow is 0.70 MGD. The maximum daily flow is 1.3 MGD.

The Influent enters the outer ring with the activated sludge flowing in a clockwise direction in all three units. The activated sludge exits the inner ring via a

splitter box on its way to the final clarifiers. The return activated sludge is brought back into the outer ring 180 degrees from the point where the Influent enters.

The waste activated sludge is sent to a thickener tank where a polymer is added. From the thickener tank the sludge is pumped to the centrifuge for dewatering and thickening. After the



sludge has been centrifuged it is transferred to the Thermophilic Digester. The average detention time here is approximately 10 days at 130 degrees. As sludge is pumped into the Thermophilic it will automatically overflow into the Mesophilic Digester. In the Mesophilic digester the approximate detention time is 30 days at 98 degrees.

The Mesophilic digested sludge is pumped to the centrifuge for dewatering. The average per cent of dry solids from the centrifuge is 23 to 24%. After dewatering the sludge, the cake is hauled to a sludge storage building for approximately 150 days detention time. The sludge is then removed by a contractor and applied to farm ground. With this type of operation it's "sludge in-sludge out". Before more sludge can be pumped into the Thermophilic Digester the sludge must be removed from the Mesophilic Digester for ultimate disposal

The quality of sludge is very close to meeting the requirements for a Class "A" Sludge. The sludge has met the Pathogen Reduction requirement for the past three years, which is the Fecal Coliform count of less than 1,000 count per 100 milliliters.

Inflow and Infiltration are no strangers to Marengo. The City is constantly trying to eliminate sources of I & I. One of the

Continued on page 11



Water Treatment
Master Plans
Residuals Management
Distribution System Improvements
Storage Facilities
Elevated Storage Tanks
Grant & Loan Applications
Rate Studies
Electrical Power & SCADA
IDS Evaluations

Springfield
217-767-0030

Aurora
630-820-1022

Chicago
312-955-2540

Rockford
815-963-9375

Edwardsville
618-656-0470

Peoria
308-637-1850

St. Louis
314-436-5500

CMT
CRAWFORD, MURPHY & TILLY, INC.
CONSULTING ENGINEERS
www.cmtengr.com

About Those Samples and Reports

We Have to Do!

By Wayne Nelson, Training Specialist/Field Staff Coordinator

I've been involved in the water treatment field for 35 years and I am proud to be a member of a group of people that produces safe water for their customers, their friends, and their families. I'm happy to say that water operators do it right. Sorry, I meant to say that most operators do it right. Some cut corners here and there on different items that don't amount to a hill of beans but in this article I only want to speak to those that cut corners on their monthly reports and sampling procedures. To the rest of you I thank you for a job well done.

In the last year I've had several IEPA people speak to me about the importance of training operators to do true and accurate reports. The topic of proper sampling was also brought up. Unfortunately, I'm not talking about test reagent age or clean glassware or entering calculated dosages. I'm talking about a few operators that are submitting monthly reports that would be listed on a best-seller list as a work of fiction. I'm talking about all bacteriological and other required samples being collected straight from the water plant lab sink. I'm talking about the bottle of water under the sink that has a perfect 1.0 mg/L fluoride result. And, I'm being told by IEPA people that this is going on! They want me to instruct operators on

how to do it legal! In fact, at a recent operator's meeting an IEPA spokesman told the class that an on-going State Police investigation will soon result in charges against an Illinois water operator.

As a professional I shouldn't need to implore you to enter monthly report data correctly. If your fluoride reading is a little high or low put the result down—even the best operators aren't perfect. When the IEPA looks over a report and every daily test result is the same as the day before it sends up a red flag. When the people that live at your routine bacteriological collection sites never see you that sends up a red flag.

Bacteriological samples are proof that your drinking water is safe. If an operator collects all of his samples at the plant it only proves that the water at the plant is safe. If an operator collects all of his bacteriological samples at the plant I can only assume one of two things: one, that he feels that the water in his distribution system isn't safe to drink or two, maybe the operator is a little bit on the lazy side. If the reason is because that operator has too



much other stuff to do it's time to re-evaluate priorities.

In closing, I always get upset when I get a call from a system's customer or elected official and told that people are sick because of the drinking water. Our country has a record of having the safest drinking water in the world. A major reason for this record is the diligent of water operators doing it right and I know that all operators can do it right!

Thomas A. Newell
Professional Cleaning
Sand and Rock Filters
Phone 217-644-3087
R. 0106 13
Strasburg, Illinois 62465
www.thomasnewell.com

24 Hour Emergency Service
WATER LEAK LOCATORS LLC
Serving Municipalities • Utilities • Industries • Contractors
152 Mine Road • P.O. Box 409
Platteville, WI 53818
800-723-4181 • Fax: 608-348-4314
Dave Holmes P.E.
We'll Find Your Leak.

RHUTASEL and ASSOCIATES, INC.
Consulting Engineers • Land Surveyors
Serving Southern Illinois
Since 1968

TRANSPORTATION	STRUCTURAL
LAND DEVELOPMENT	LAND SURVEYS
WATER/WASTEWATER	STUDIES

PH: 618-339-3178 / 4180 National Drive, Freeburg, IL 62243 / fax: 618-339-3178
WI: 608-732-1992 / 201 S. Locust St., Carthage, IL 62901 / fax: 618-339-3178



**OUR MISSION IS TO PROVIDE OUR CLIENTS
WITH THE BEST CUSTOMER SERVICE IN
THE RESIDUALS MANAGEMENT BUSINESS.**

STEWART SPREADING IS A FULL SERVICE RESIDUALS MANAGEMENT COMPANY. We understand the importance of providing timely and quality service. Our company is managed by a group with over 75 years of combined experience in the environmental services industry.

One of the keys to our success is innovation. Not satisfied with being just another beneficial recycling company, we are constantly analyzing production numbers and designing equipment to progressively and consistently meet the demands of our clients and farming customers.

With roots deeply embedded in the farming community, Stewart Spreading has a unique understanding of farming operations and has consistently brought farmers and municipalities together, forming beneficial relationships that last.

Stewart Spreading is a full service Residuals Management and Environmental Services Company. We emphasize customer service and do all of our land application programs with our own people. When you contract with Stewart Spreading, you can rest assured that the work will be done by Stewart Spreading.

With a proven track record of providing innovative, timely and economical solutions, Stewart Spreading wants to be your management team of choice. Let us prove it to you.

Call Stewart Spreading for all of your Residuals Management Service Needs.

- MOBILE DEWATERING • LAND APPLICATION •
- DRINKING WATER RESIDUALS • DIGESTER CLEANING •
- LAGOON CLEANING • EPA REPORTING •
- CLASS A & B TECHNOLOGY •

NO PROJECT IS TOO LARGE OR TOO SMALL

CONTACT US:

3870 N. IL Route 71
Sheridan, IL 60551

Phone: 815-695-5667
Fax: 815-695-5770

stewartspreading@aol.com



main sources of I & I is the old collection system, which has leaky joints, due to the deterioration of the oakum and mortar joints. Lining the existing sanitary sewers is a route the City is considering for solving the I & I problems.

The Engineering Firm who designed the Sludge Handling Process is McMahon & Associates from Machesny

Park, Illinois. The engineer who strongly suggested using the two types of anaerobic digestion is Tim Bronn. Tim had the foresight in using a system that had the potential of meeting the criteria of a Class "A" digested sludge.

The City has a qualified and dedicated staff. Steve Fiepke is a Class 1 Operator and is the Wastewater Treatment Plant

Superintendent. Jim Craney is the Public Works Director.

Tim Mack and Bob Lockinger are the Plant's labor force. Ed Nadeau is the Water Plant Superintendent and Collection System Superintendent.

I appreciate the assistance from Steve and his staff for the "Grand Tour".

ALLIANCE Windows Suite
True Windows-Based Software

- Utility Billing & CIS
- Accounting & Budgeting
- Asset Management
- Municipal & Tax Applications
- Hardware & Networking Services
- Consulting, Training, Modern Support
- 24-hour 800 Telephone Support

Itron
Automatic Meter Reading (AMR)

- Handheld Systems
- Mobile "Drive-By" Systems
- Radio-Based Meter Modules
- Modules for All Major Meters
- Host Software & Complete Training
- 24-hour Support - 7 Days a Week

United Systems

P.O. Box 547, 205 Ash Street, Benton, KY 42025
1.800.455.3293 - www.united-systems.com
All trademarks are property of their respective owners.

WE COVER YOUR INFRASTRUCTURE™

EJIW is a leading manufacturer of construction castings, drainage products, detectable warning plates, valve boxes, utility castings, tree grates, trench grating, and fire hydrants & valves.

Call today for a Free Catalog

800.626.4653

EJIW EAST JORDAN IRON WORKS EST. 1983 www.ejiw.com
MADE IN THE USA



Don't Miss the
**PHILADELPHIA
EXPERIENCE!**



'07

**Concentrated Learning
JUST ADD WATER!**

SESSIONS INCLUDE:

Leadership
Board Training
Regulations/Legislation
Technical
Computer Technology
Marketing
Public Relations
Accounting
AND MORE!

PHILLY!

**National Rural Water Association
Annual Leadership Conference
& Exhibition Center**

September 23-28

THE INDUSTRY EVENT!

Philadelphia Marriott Downtown • Room block opens June 1st

Register at www.nrwa.org or call 800-332-8715



CALDWELL TANKS, INC.

Tank Builders Since 1887

**SUPERIOR CRAFTSMANSHIP
PAST, PRESENT AND FUTURE**

Founded in 1887, Caldwell Tanks has provided customized water storage solutions for municipalities and corporate clients throughout the United States and Canada for over one hundred years.

Our award-winning tanks will exceed your construction standards, always with a strong focus on your budget and timing requirements.



PEDESHERE

GROUND-STORAGE

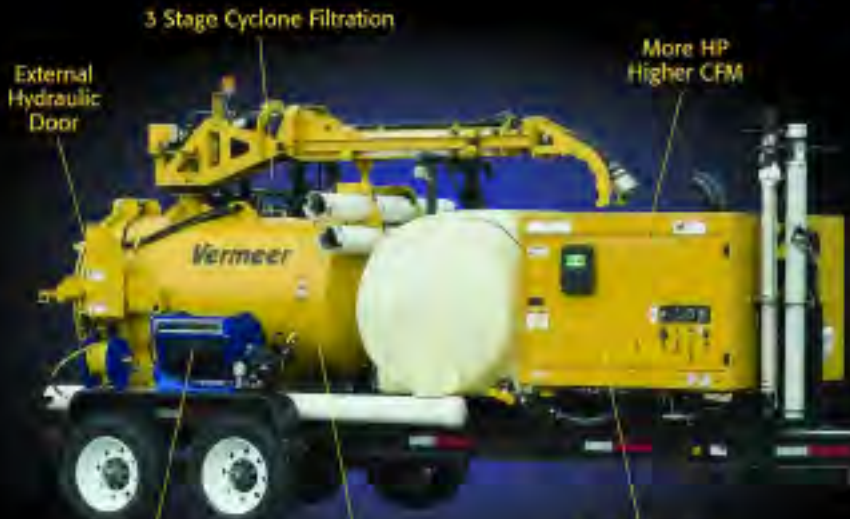
FLUTED

MULTI-COLUMN

COMPOSITE

Headquarters, Manufacturing & Sales Office: 4000 Tower Rd • Louisville KY 40219 • Phone (502) 964-3361 • Fax (502) 966-8732
Southern Manufacturing Facility: 57 East Broad St. • Newnan GA 30263 • www.caldwelltanks.com • sales@caldwelltanks.com

TACKLE YOUR SMALLER JETTING PROJECTS COST EFFECTIVELY



3 Stage Cyclone Filtration

External Hydraulic Door

More HP Higher CFM

Sewer Jetter
12gpm or 25gpm models

In Tank Wash Out System

Single Engine Design Decreases Noise & Fuel Expense

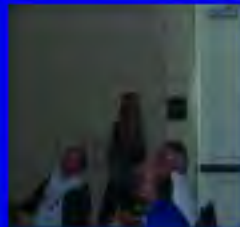
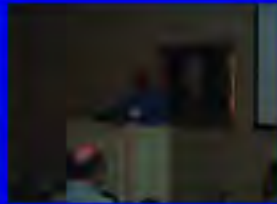
- Options Included:
- 1,025 CFM Blower
 - Combination Sewer Jetter/Vacuum
 - Auxiliary Hydraulic Circuit
 - Hydraulic Boom

Contact your local Vermeer Dealer for Vermeer / *THE MIGHTY MOLE* Vacuums



800.435.9340 • 864.277.5870 • MMOLE@MIGHTYMOLE.COM

Vermeer® is a registered trademark of Vermeer Mfg. Co. GSA# GS-07F-0166T



A variety of classes were offered by many different speakers!!

National Rural Water Association Board President, Rodney Tart, spoke at the annual meeting.



PICTURES FROM THE EXHIBIT HALL



2007 Illinois Rural Water Association Water Taste Test Winner went to Lake Egypt Water District located in Marion, Illinois (Middle picture)



Tim Schilson—Water Operator of the Year



Mel Pleines—Person of the Year



Village of Elkhville—Wastewater Plant of the Year



Perry Musgrave—Wastewater Operator of the Year



PDC Laboratories—Associate Member of the Year



Village of Stonington—Water Plant of the Year



CASINO NIGHT



EARTHTEC®

Algicide/Bactericide

EarthTec® is an innovative algicide/bactericide containing high concentrations of non-chelated biologically active ions (Cu⁺⁺). EarthTec® is a fully dissolved solution that self-disperses rapidly and evenly throughout the water column. EarthTec® remains in suspension indefinitely until it meets demand without copper settlement on the bottom.

POTABLE WATER

- Removes Taste and Odor (MIB & Geosmin)
- Reduces TOCs and DOCs
- Produces No Disinfection-By-Products
- Eliminates Bio-Film

WASTEWATER

- Reduces BODs and TSSs
- Stabilizes pH
- Controls Hydrogen Sulfide Gases
- Reduces Fecal Coliform and E-coli



©2007 Earth Science Laboratories, LLC

Less algae. Less work. Less copper.

(800) 257-9283 • www.earthsciencelabs.com

BEAUTY IS IN THE EYE OF THE BEHOLDER WHO DOESN'T HAVE TO PAY TO MAINTAIN IT

The great thing about a Natgun water storage tank is once you put it in service it stays in service.

For decades. Without interruption.

You don't maintain it.

You don't repaint it.

You don't worry about it.

Heck, you don't even cut the grass

if you don't want to.

NATGUN
PRECAST, PRESTRESSED, PREFERRED

JERRY MYERS, MIDWEST REGIONAL MANAGER

847-782-0357, WWW.NATGUN.COM

SHOWN: 1.0 MG WATER STORAGE TANK FOR THE VILLAGE OF GLEN CARBON, IL

ENGINEERING BY JUNEAU ASSOCIATES, INC., P.C.



New Test Methods for Wastewater and Biosolids

Effective April 25, 2007, there will be several new test methods for wastewater and biosolids that will likely impact NPDES permit holders. Permit holders will be required to use these new test methods for permit application and reporting. The new test methods include five new E. coli methods for wastewater, two enterococci methods for wastewater, two fecal coliform methods for biosolids and one Salmonella method for biosolids. In addition when using the new fecal coliform methods for sludge, the sample holding time has been extended from 6 hours to 24 hours for Class A composted sludge, Class B aerobically digested sludge and Class B anaerobically digested sludge. NPDES permit holders should consult with their contract lab to insure the new methods will be used or

update their internal laboratory procedures for in-house analysis. Further information including references to the test methods can be found in the attached pdf file.

Analytical Methodology Changes

Effective April 11, 2007, EPA has made numerous changes to analytical methods, holding times, preservatives and sample collection containers affecting both drinking water and wastewater. In some cases there are new methods, in some modifications of existing methods and elimination of current methods. The following sections of the Code of Federal Regulations (CFR) have been impacted: 40 CFR 122 - the NPDES program, 40 CFR 136 - Test Procedures, 40 CFR 141

- Primary Drinking Water Regulations, 40 CFR 143 - Secondary Drinking Water Regulations, and 40 CFR 430/455/465 - certain industrial point sources. All utilities should refer to the following before sample collection to ensure compliance with the latest updates.

[http://www.epa.gov/fedrgstr/EPA-WATER/2007/March/Day-](http://www.epa.gov/fedrgstr/EPA-WATER/2007/March/Day-12/w1073.htm)

[12/w1073.htm](http://www.epa.gov/fedrgstr/EPA-WATER/2007/March/Day-12/w1073.htm). In addition the utility needs to update in-house laboratory procedures and/or insure contract laboratories are aware of these changes.

For compliance with the biosolids regulations under 40 CFR 501-503, the new rule specifically requires the use of analytical methods under 40 CFR 136 unless a different analytical methodology is specified in 501-503.

WELCOME NEW MEMBERS!

VOTING

Village of Ellettsville
Village of Smithton

ASSOCIATE

Apex Pumping Equipment
Hoer Construction
Kaskaskia Engineering Group
Shaw Environmental, Inc.
Water Products Company

SOUP

Edwin Heer
Kevin Sullivan

UPCOMING TRAINING SESSIONS

Water

May 16, 2007—Regulatory Update—Alledo
May 24, 2007—Regulatory Update—Lake Bloomington

Wastewater

May 16, 2007—Treatment & Sludge—Carterville
May 23, 2007—Activated Sludge—Monticello

WW

Water Well Solutions

Design, Service, & Installation

888-769-9009
Oconomowoc, WI • Beecher, IL
www.waterwellsolutions.com



Partners in Testing



Superior Service and Expertise Go Hand in Hand.

McHenry Analytical's exclusive alliance with PDC Laboratories means our clients receive the best testing in the analytical industry, period. With a staff of over 80 professionals, PDC is the largest independent drinking water laboratory in the State of Illinois. Combined with McHenry Analytical's excellence in service and stringent standards, together, we provide the best professional staff and service, extremely quick turnaround and the highest quality testing.
Accept nothing less than the best.



McHenry Analytical Water Laboratory
Scientific Water Testing & Chemical Analysis

www.McHenryLab.com | 815-344-4044



PDC Laboratories, Inc
Environmental Service Excellence for 75 Years Strong

www.PDClab.com | 800-752-6651

It's my understanding that in the "good old days" they handed out certifications in water and wastewater to anyone who happened to want one. I missed standing in that line when that happened. So, like most of you, to get certified in water or wastewater I had to pass the state exam. "Are you sure I have to pass a test?" Well I'm not real sure, but the people at the Illinois Environmental Protection Agency seem real set in their ways about this matter and it appears they are not going to change their minds soon. Well, if that's the way EPA is going to be, I guess a guy or gal had better study a little and take the darn test.

"First of all, how many questions are on the water treatment test?" "Which test are you going to take?" You mean there is more than one test?

Yes, there are four separate tests on water treatment, the Class A, B, C and D. The D has 100 questions, the C has 150 and the B and A each have 200. Essay questions probably. Nope, all multiple choice. You get to pick one of four answers. I suppose you have to score 90 percent or better to pass the test? Nope, just have to get 70 percent or higher. I bet I could do that with my eyes closed? I don't think you want to think that way, they don't hand the certificates out just for showing up at the exam.

Some study may be more in order. By the way, have you sent in your applica-

tion to see if you are eligible to take an exam. What! You mean I have to do some paper work before I can even take an exam? Yes, EPA reviews your application and then based upon the certification rules and regulations; they will inform you which test you are eligible to take. But, I hate filling out paper work.

Brother, hang on to your hat because paper work and record keeping is going to be part of your life if you get in the water and wastewater profession. But as an aside, I might mention your going to love being in the water and wastewater field.

There are a lot of nice people in the profession. Some of the operators feel the same as you do about the paperwork and the rules and regulations. After a while you will get accustomed to the paperwork.

Now your getting me off track about taking the exam with all this paperwork talk, were can I go to have someone help me study and pass this exam? Well, I'm glad you asked. The best place I know to get help is the ILLINOIS RURAL WATER ASSOCIATION. Good outfit to work with? You bet, the best!!!

IRWA gives all kinds of training to the operators and in locations all around the state that an operator can get to easily. But the topper, is they will come right to your front door and give you one-on-one training for the certification exam. You



must be kidding, you mean that all I have to do is contact IRWA and they will send somebody to my town and help me study for the state exam? "Darn tootin'", I mean yes they will. Friendly folks, the people at IRWA!

The people IRWA sends out to help you have gone through this stuff many times and will steer you in the right direction to help you get certified.

In addition, the folks at IRWA they are real interested in seeing you succeed in both getting certified and at operating your treatment system. They take a lot of pride in helping folks in the profession.

Why don't you give them a call at 217-287-2115. The gals at the IRWA office, Denise and Heather, will help you get started in the right direction. And if your one of those computer people, then you can just log on to the IRWA web site at www.Irwa.org and click on training. And good luck on taking the exam.

Here's hoping you pass it!

Underwriter of Tax Exempt Bonds and Lease Financing

FIRST ST. LOUIS SECURITIES, INC.

Thomas McNeely, Senior Vice President

8860 Ladue Rd. Suite 100, St. Louis, MO 63124

888-726-2880

tmcneely@firststlouis.com



"Working With You By Design"

7615 North Harker Drive
Peoria, IL 61615
309-693-7615

1670 E. Ash Street
Canton, IL 61520
309-647-7831

www.maurerstutzinc.com

Comprehensive Engineering ▲ Surveying
Environmental Services ▲ Agricultural Services

PEORIA ▲

▲ CANTON

The Vacation Experience of a Lifetime: Hershey Park in Pennsylvania

By Robert W. Benjamin

Have the vacation of a lifetime at Hershey Park in Pennsylvania, the best Attractions to see - Best times to visit - Places to stay, and more.

If you are heading up towards Amish country in Pennsylvania you need to make sure you make time for Hershey Park. This city that is great for year round vacations offers all kinds of activities for families that are just a lot of fun. When you are in Hershey, Pennsylvania, you will be able to enjoy it all no matter what your age.

Hersheypark is the best family amusement park, or so voters say. The rides, attractions, and games are a lot of fun and designed specifically for families. This theme park has more than 60 rides from roller coasters to family rides and kid rides to water rides. Hersheypark opens for a few days in May and September and is open full time in June, July and August. The price for Hersheypark also includes ZooAmerica entrance, so keep that in mind. Fun times to visit the park include October for Halloween thrills and December for the Christmas CandyLane.

Other fun activities in Chocolate Town USA include the Hotel Hershey where anyone will enjoy the spa and kids have their own club. Zoo America is close by and is a decent sized zoo that can be easi-

ly walked through and enjoyed. The Hershey's Chocolate World is also a cool place to visit and kids can even pack their very own Hershey's kisses. Seeing how the chocolate is made and packaged is really a lot of fun and educational.


The best time of year to visit depends on what you want to do. If you want to visit Hersheypark then visiting May-September is the best plan, unless you want to be there for the Halloween or Christmas festivities. Remember that the summer months have more tourists and the park is more crowded, but the weather is generally nice. May and September frequently are better times to visit if you want to avoid the heat and the crowds. Your budget might affect when you travel as well and if you are trying to save money then the earlier and later months are generally cheaper as far as lodging is concerned.

It is a good idea to book your vacation in advance to ensure you stay at the hotel of your choice and to lock

in rates. If you wait until the last minute you might not get the exact vacation you were looking for. Also, booking online will frequently save you money. These tips can really help you plan your Hershey, PA, vacation.

There is a website that has great information on USA Vacations and Unique Travel Spots listed state-by-state and season, the website is called: Seasonal Vacation Spots, and can be found at www.seasonalvacationspots.com

Robert W. Benjamin has been in the software business on the internet for over 6 years, and has been producing low-cost software for the past 25+ years. He first released products on the AMIGA and C64 computer systems in the late 1970's-80's.



NORMAN NOE CO., INC.
Water Tank Evaluation and Consulting
OIE 317-933-2274 Fax 317-933-2582

NORMAN NOE, President
NACE Certified Coating Inspector #1891
AWWA Life Member

Norman@NormanNoeWaterTankInspection.com
www.NormanNoeWaterTankInspection.com



LemTec™ Covered Lagoon Treatment Process

- Guaranteed NH₃-N removal even in cold climates through use of the LemTec™ Modular Cover
- Meets highly stringent effluent limits not achievable with other aerated lagoon systems
- Reduces capital and operating costs significantly when compared to mechanical treatment systems
- Requires less land than most comparable technologies
- Reduces sludge and solids handling
- Allows for hydraulic loading variations, temperature fluctuations, and organic surges effectively
- Expands for growth without major capital outlays

Your local representatives:

 10041033 - Water/Wastewater Solutions	Northern Illinois Peterson and Matz Phone: 847-844-4405 www.petersonandmatz.com
	Southern Illinois Ressler & Associates Phone: 636-391-8992 www.resslerassociates.com

Phone: 812-253-2002
www.lemnatechnologies.com



WASTEWATER CONSULTANTS

Heneghan and Associates, P.C.

Engineers - Surveyors
Toll Free: 888-291-7615
www.haengr.com

We Make It Simple.

Double-duty contingency plan...

For when things go wrong, and to keep them going right.

Dri-Prime
pumps featured
in WEF Operations
Challenge Maintenance
Event 2005-2006

Pumping and power in one dependable package

Think of the peace of mind you'll have with a contingency plan in place for when things go wrong. With the **Godwin Dri-Prime® Backup System** you'll get independently powered pumping in one dependable package for emergencies including primary power, switch gear, and sewage pump failures or repairs, and for primary pumping during routine maintenance.



Plus, the **Dri-Prime® Backup System** seamlessly interfaces with your existing control systems, allowing you to maintain electronic remote monitoring.

So before you have to pull double-duty, let the **Godwin Dri-Prime® Backup System** do it for you.



Ask for
the genuine
Dri-Prime®

Godwin Dri-Prime® pumps
(800) 426-5475 (USA only)

**You'll never have to
stop pumping again!**



**Think Orange.
Think Godwin.**

Great Pumps. Great People.

Worldwide Pump Rentals & Sales
Local Rental Office!

1637 Chicago Avenue • Lansing, Michigan 48906

Phone: 734-889-1510 • Fax: 734-889-1511

sales@godwinpumps.com



FULL SERVICE MAINTENANCE PROGRAMS

GA30 34 Compliant
Interior and Exterior: Painting, Repairs, Safety Accessories
Inspections, Washouts, Disinfections

WIRELESS COMMUNICATIONS SERVICES

Antenna Site Management • Antenna Installations
Design Reviews/Project Management

TAX EXEMPT FINANCING

Asset Acquisition and Infrastructure Growth
Extremely Competitive Rates
No "Red Tape"

NEW TANK SALES

Expedited Delivery
Any Style, Design, Capacity

Utility Service Co.

I N C O R P O R A T E D

CORPORATE OFFICE:

P.O. Box 1150
Perry, GA 30069
Phone: 800-221-3695
Fax: 478-567-2991
www.uslmservice.com

CONTACT:

Bill Marfree
Phone: 815-761-6880
billmarfree@utilityservice.com

Kirt Ervin
Phone: 314-614-9120
kervin@utilityservice.com

Total Environmental Service Technologies, Inc.



• **Field Services** •

- **Contract Services – Water/Wastewater** •
- **Regulatory Compliance Services** •
 - **Certified Laboratory** •
 - **IEPA Regional Lab** •
 - **Consultant Services** •

Over 100 Plants & Operations throughout Illinois

Peru, Illinois Established 1987
815-224-1650 www.testinc.com

- Bushnell • Carthage • Coal City • Hinckley •
- Peru • Avon • Prairie City • Dallas City • Creve Coeur •

Neptune's R900 and E-Coder

Two Proven Technologies Integrated Into One Device

- **Single, Wireless AMR Solution**
- **High 8-Digit Resolution**
- **Leak Detection**
- **Tamper Detection**
- **Reverse Flow Detection**
- **Reduced Material & Labor Costs**

Contact Northern Water Works Supply for complete details on the Neptune E-Coder| R900i . . . and take the next step in meter reading technology.



E-Coder| R900i



northern water works supply

FERGUSON WATERWORKS

Bismarck, ND
701-258-9700
800-932-8759

Blaine, MN
763-560-5200
800-844-8334

DeKalb, IL
815-756-2800
866-759-2800

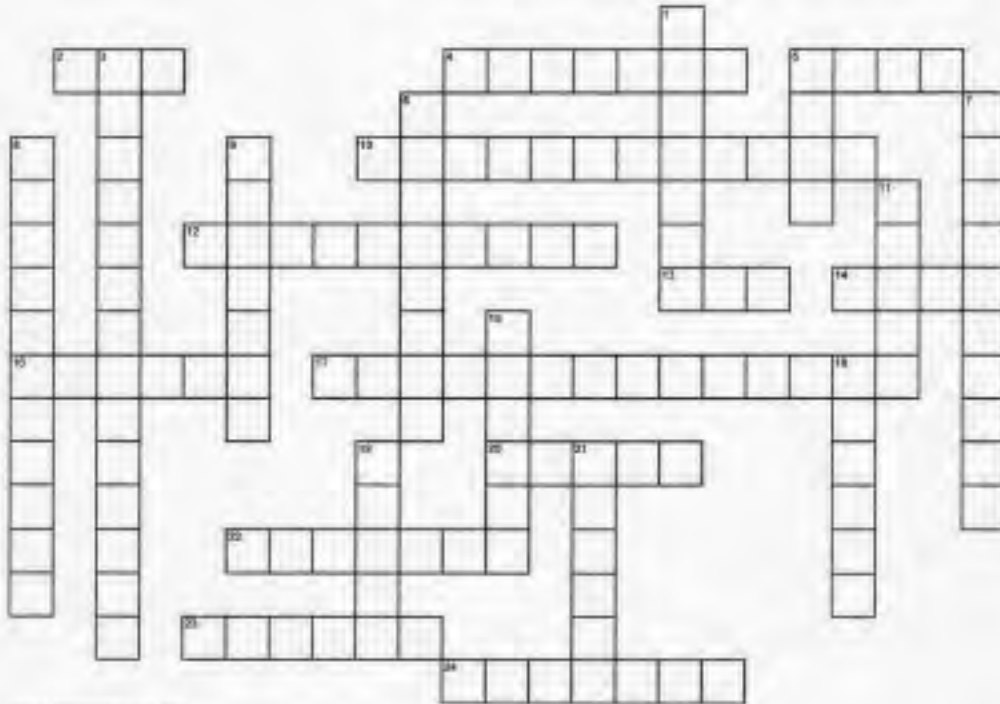
Fargo, ND
701-293-5511
800-437-4362

Madison, WI
608-271-1770
800-833-0880

Sartell, MN
320-229-0125
800-729-2850

www.nwws.biz

Baseball



www.CrosswordPuzzle.com

ACROSS

- 2 Wooden stick
- 4 Sticky substance used for better grip (2 wds.)
- 5 An infield hit where the hitter doesn't swing the bat
- 10 A fly ball that is caught, but scores a run (2 wds.)
- 12 Area over the plate between the knee and torso (2 wds.)
- 13 Run batted in
- 14 Ball hit out of play
- 16 1st base hit
- 17 This league was founded in the 1870s (2 wds.)
- 20 Three white bags on field
- 22 One player bunts, the other steals home
- 23 3rd base hit
- 24 Round tripper (2 wds.)

DOWN

- 1 Player who teams up with the pitcher on every play
- 3 Younger of the two leagues (2 wds.)
- 5 Not a strike; the other half of base ____
- 6 The Great Bambino (2 wds.)
- 7 Getting two outs in succession (2 wds.)
- 8 The best teams from each league playing for the championship (2 wds.)
- 9 Cy Young
- 11 The tool used by players in the field
- 15 2nd base hit
- 18 The man behind the catcher
- 19 Ricky Henderson was known for this baseball play
- 21 Not a ball (pitch)

THE WATER BOARD BIBLE SERIES

The Water Board Bible

For a quick overview of the do's and don'ts city administrators and clerks look to this handbook. If operators, managers and superintendents wish to develop a better working relationship with their boards/councils, they use the Water Board Bible. You can use it to see how your system is doing today and where you could improve.

Getting Results from your Experts

Construction projects are the theme of this handbook. That's because construction projects bring together most of the experts you work with - consulting engineers, attorneys, bond council, financial advisors, contractors, etc. They are in charge of building your project to spec, on time and within budget. It is your job to make sure your experts do theirs.

The Operator's Handbook: Facts, Figures & More

This handbook presents a fast look-up information, graphs, tables, charts, equations and formulas. The goal? To save time for these very busy people. Their unstung work supports our entire nation's lifestyles, livelihoods and livability.



From

Personnel Management

This Handbook has three purposes. 1) To help supervisors, boards/city council and employees review the basics. 2) To provide practical tips and examples concerning personnel problems and issues. 3) To look beyond the rush of daily affairs to the future and your relationship with your customers. It is by partnering with your customers, systems will be able to make decisions today about serving your children and grandchildren tomorrow.

Financial Accounting Guide for Small Water Utilities

The Financial Accounting Guide for Small Water Utilities strives to take the mystery out of accounting. It moves from basics through key concepts such as the general ledger, monthly financial results, the balance sheet, etc. This includes sample formats and examples, as well as case histories telling "how we do it here"

JUST \$20.00 EACH!
(Includes shipping & handling)

BOOK
Water Board Bible
Personnel Management
Getting Results
The Operator's Handbook
Financial Accounting Guide

QTY

TOTAL DUE

\$ _____

Mail Order to:
IRWA
PO Box 6049
Taylorville, IL 62568
or order on-line
www.ilrwa.org to pay
with Visa or MasterCard

Thanks USDA

By Rob Johnson, NRWA CEO

Last week, I sat in on the House Agriculture Appropriations Subcommittee hearing where Undersecretary Tom Dorr was questioned about rural development activities. In her opening comments Chairwoman DeLauro noted that the amount of funds requested for the RUS water and waste program was inadequate. She and others spoke of the significant backlog of requests for loans and grants. Congressman Farr praised the success of the Circuit Rider program and comments that perhaps every program with USDA should have a Circuit Rider type program.

During one of the recesses for floor votes, I had a chance to speak with Mr. Dorr, Mr. Andrews and several staff members from the subcommittee members. The collegial atmosphere among those participating struck me.

Rural Development is an area in USDA where there is a very cooperative spirit. We all agree that more funds are needed but the common sense of purpose and focus is extraordinary. And their efforts have changed the lives of us that live in Rural America.

I live in a very rural area and all my utilities come from cooperatives financed by RUS. I am proud to be served by a rural electric cooperative, a rural telephone cooperative and a rural water district. Without them, life would not be the same for my family, children and grandchildren.

RUS or Farmers Home Administration in another era has always attracted people who care about Rural America. Dwight

Calhoun, Glenn Bennett, Jim Schwartz and now Gary Morgan have directed the Water and Waste Program in RUS. These people have made dealing with them a pleasure because they all really cared about what they did. Last year, this program was recognized as the highest rated lending program in all of the U. S. government. We've known that for a long time.

People at the state and district levels of RUS are equally as dedicated and committed to their mis-

sions. These wonderful people have brought good people together with good water and changed the way we live.

Thank you for your service to Rural America!



WANTED

**Safety Videos
pertaining to the
water and
wastewater industry.**

**Please call Amanda
at TEST, Inc.**

815.224.1650



WATER SOLUTIONS UNLIMITED, INC.

P.O. BOX 047
HUNTINGTON, IN 46521-0047
317.736.9960
FAX 317.736.4323

March 12, 2007

Ms. Ann
Attention: Staff
3305 Kennedy Rd. P.O. Box 5049
Taylorville, IL 62568

Dear Frank Staff:

As an Illinois water treatment operator and now as a service provider and consultant, I would like to express my gratitude for all that your organization has done and continues to do for water treatment specialists throughout the State of Illinois.

I had recently your staff members helped me with allowing me to use the groundwater flow model with rain meter to do a demonstration for an entire class of 37 grade students at the Glenview, IL, grade school.

If the attached letters from each and every one of these students is not an indicator of how appreciative students are at this age, I am not sure what is. The day that I did this demonstration for these students they had a scientific lesson. They wrote these letters to me for their teacher as a writing assignment. Obviously the candy that I also brought them was a hit but I was really impressed with how much they had understood from what I had told them that week they wrote these letters.

This is proof that what you folks do here is truly making a difference and on behalf of Glenview Community Dist. 200 third grade, I would just like to say thank you and keep up the good work!

Best regards,

De
Dave Rubin
Water Quality Consultant
Water Solutions Unlimited

Attachments: 1. 1st 2nd grade student letters



Bring the right product/brand for the right application.



Village of Hampton Illinois

PRESIDENT:

CLERK:

TREASURER:

DEPUTY CLERK:

TOWNSHIP:

WARD:

WARD:

WARD:

WARD:

WARD:

WARD:

WARD:

WARD:

WARD:

March 02, 2007

Mr. Greg Babin, President
Illinois Rural Water Association
3305 Kennedy Road
PO Box 5049
Taylorville, IL 62568-0049

Dear Greg:

I want to thank Greg Babin and the Illinois Rural Water Association for all the help they have given me in getting my water purification system. We have been without a licensed operator for our system for quite a few years. With Greg's help, we now have a licensed operator again.

I have said it before, for small municipalities and systems such as ours, I don't know how we could continue to do an effective job as we do without you. I don't know there is a possibility of some Federal funding such as being at the Illinois Rural Water Association. Why don't I try and find out more information about this, and what can I do for you?

Once again, please send our thanks to Dale for all he does for us.

VILLAGE OF HAMPTON

Michael J. Tolbert
Michael J. Tolbert
Chair

1001 North Lincoln • P.O. BOX 117 • Springfield, Illinois • 62767
618-233-3333 • 618-233-3333

SHAWNEE VALLEY WATER DISTRICT & WOLF LAKE SANITARY CORPORATION
P.O. Box 119
Wolf Lake, IL 62995
618-822-2740

February 16, 2007

Frank Dierksen
Executive Director
Illinois Rural Water Association
P.O. Box 5049
Taylorville, IL 62568

Dear Mr. Dierksen:

I would like to take this opportunity to thank Pat Gurnell and your organization for your assistance in responding to our advisory letter from SWP. Pat contacted IIRWA and obtained a copy of our Cross Connection Ordinance for our records. We also brought all the necessary legalities for conducting a Cross Connection survey of our water consumers and was instrumental in helping me complete our response letter to IIRWA. This is one example of the exact reason we joined your association. It was a great relief to be able to call someone with experience in responding to IIRWA.

Again, thank you and your staff for the timely response to our need. You are tremendous source of information to draw from for our small district.

Respectfully,

Caroline Goss
Caroline Goss
Office Manager

VILLAGE OF BROWNSVILLE
311 W. MAIN ST.
BROWNSVILLE, IL 62509
618-233-3333

February 6, 2007

Illinois Rural Water Association
Patricia Gurnell, Circuit Rider
P.O. Box 5049
Taylorville, IL 62568

Dear Pat:

The Village of Brownsville would like to say THANK YOU for your assistance for helping Mike Saffer, Water Superintendent check for water leaks, due to the village having a 20% water loss.

Thank you for your assistance and support.

Sincerely yours,

Mike Saffer
Mike Saffer
Water & Sewer Superintendent
Sherry Masler
Sherry Masler
Village Clerk

VILLAGE OF ASHMORE

P.O. Box 28
Ashmore, IL 62512
Phone: 618-233-4532
Fax: 618-233-4532

February 6, 2007

Illinois Rural Water Association
P.O. Box 5049
Taylorville, IL 62568

Mr. Jeffrey Clark, Water Superintendent

On November, January 23, 2007, I had with me 1000 gallons of water from my residential water meter and the meter was found to be "leaking" water. I contacted you for the meter and you had it replaced for me. My contact with you was very helpful.

When you have a plumbing problem, you need to know who to call for the village. It is not always easy to find a plumber who is licensed and bonded. IIRWA has a list of plumbers who are licensed and bonded. IIRWA has a list of plumbers who are licensed and bonded. IIRWA has a list of plumbers who are licensed and bonded.

We were able to get a plumber who is licensed and bonded. IIRWA has a list of plumbers who are licensed and bonded. IIRWA has a list of plumbers who are licensed and bonded. IIRWA has a list of plumbers who are licensed and bonded.

I would like to thank you and your staff for the help you have given me. IIRWA has a list of plumbers who are licensed and bonded. IIRWA has a list of plumbers who are licensed and bonded. IIRWA has a list of plumbers who are licensed and bonded.

IIRWA has a list of plumbers who are licensed and bonded. IIRWA has a list of plumbers who are licensed and bonded. IIRWA has a list of plumbers who are licensed and bonded. IIRWA has a list of plumbers who are licensed and bonded.

The Village of Ashmore and myself would like to express our appreciation to the Illinois Rural Water Association for the help and support you have provided.

David Shadin
David Shadin
Village Clerk

Thursday, March 29, 2007

Frank E. Dierksen
Executive Director IIRWA
PO Box 5049
Taylorville, IL 62568

Dear Mr. Dierksen:

I am sending this letter out of appreciation of all the work that Mike Mitchell did in getting together our contingency plan for emergency preparedness. This has saved me a lot of time and will be a valuable tool for me and my staff. Mike was very enjoyable to work with and I look forward to working with him in the future. Thanks again for the services you provide.

Shelley Clark
Shelley Clark
Public Works Superintendent
Codenville Illinois

100% PURE AQUASTORE[®]



**PURITY OF
GLASS**

**STRENGTH OF
STEEL**

Glass is permanently fused to steel before building an Aquastore tank. That's why it's the ultimate hygienic solution for all of your liquid storage needs.

The glass-fused-to-steel material makes it the "kitchen sink" of tanks - a durable, never painted substance people trust and use every day.

Given a choice, you'd want to drink from a hygienically clean glass. Why store your water in anything less?

Contact us when you're thirsty for a tall glass of water.

Glass
Built to Last!



920 W. Prairie Drive Ste. G, Sycamore, IL 60178
Ph: 815-899-5678 • Fx: 815-899-5681
www.cadyaquastore.com

Represented in Southern Illinois
Municipal Equipment CO., Inc., St. Louis, MO
314-645-2400

Represented in Northern Illinois
Peterson and Matz Inc., Elgin, IL
847-844-4405

USA BlueBook®

Get the Best Treatment™

... with unsurpassed customer service & expert technical support

Our Customer Service Representatives are ready to answer questions, place an order, quote pricing, or track a shipment. For technical questions, our expert Tech Support team offer unbiased advice from years of experience in the field.

... with our fully stocked warehouse—thousands of products, ready to ship today

Don't wait for that critical product. USA BlueBook has over 22,000 items available, and 95% of orders ship the same day!

... with the widest selection of products for the water & wastewater industry

Our Master Catalog features thousands of products—everything you need to keep your water or wastewater facility running. Our 100% money-back guarantee lets you order with confidence.

Request your FREE 1450-page catalog today!



lab



wastewater



water

field



USA BlueBook®

1-800-548-1234

www.usabluebook.com



3305 Kennedy Rd.
P.O. Box 6049
Taylorville, Illinois 62568